

Nozzles



Designed with:
3M™ Novec™ 1230
Fire Protection Fluid

N 180 and N 360

The SEVO® 1230 system nozzles are designated to provide rapid and thorough vaporization and distribution of agent with the air in the protected space. Standard nozzles are made of aluminum. Pre-engineered system nozzles are made in three pipe sizes: 1", 1 1/2", and 2".

Hydraulically calculated nozzles are available in 1/2", 1", 1 1/2", 2" and 2 1/2" with a selection of orifices designed to provide the proper flow rate and distribution of agent to flood a hazard area. The sidewall nozzle is engineered to provide a 160° drill pattern to prevent dissipation on wall surfaces.

Features

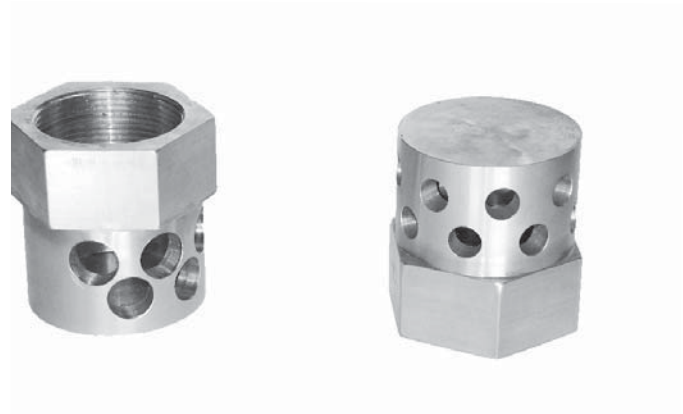
- Pre-engineered sizes: 1", 1 1/2", 2" and 2 1/2"
- Engineered sizes: 1/2", 1", 1 1/2", 2" and 2 1/2"
- 160° and 360° Discharge options
- High flow rate
- Large area distribution coverage

Architecture/Engineering Specifications

Each nozzle has a standard female pipe thread for attachment to discharge piping. Nozzle shall be spaced in accordance with the instructions in the pre-engineered system design manual as required for UL Listing or FM Approval or according to NFPA 2001. Each nozzle shall be marked with the SEVO® Systems part number.

The maximum nozzle height per layer of coverage is 14 ft (4.27m). Nozzles should be placed at least 5" below the ceiling surfaces. Sidewall nozzles have a straight discharge pattern to allow placement along a wall from 7' (2.14m) AFF to 5" (12.7cm) below the ceiling.

Both sidewall and central nozzles are tested for a maximum area coverage using a 32' (9.5m) wide by 32' (9.5m) long enclosure.



Listings/Approvals

360 PSI/25 Bar

500 PSI/34.5 Bar

UL

FM